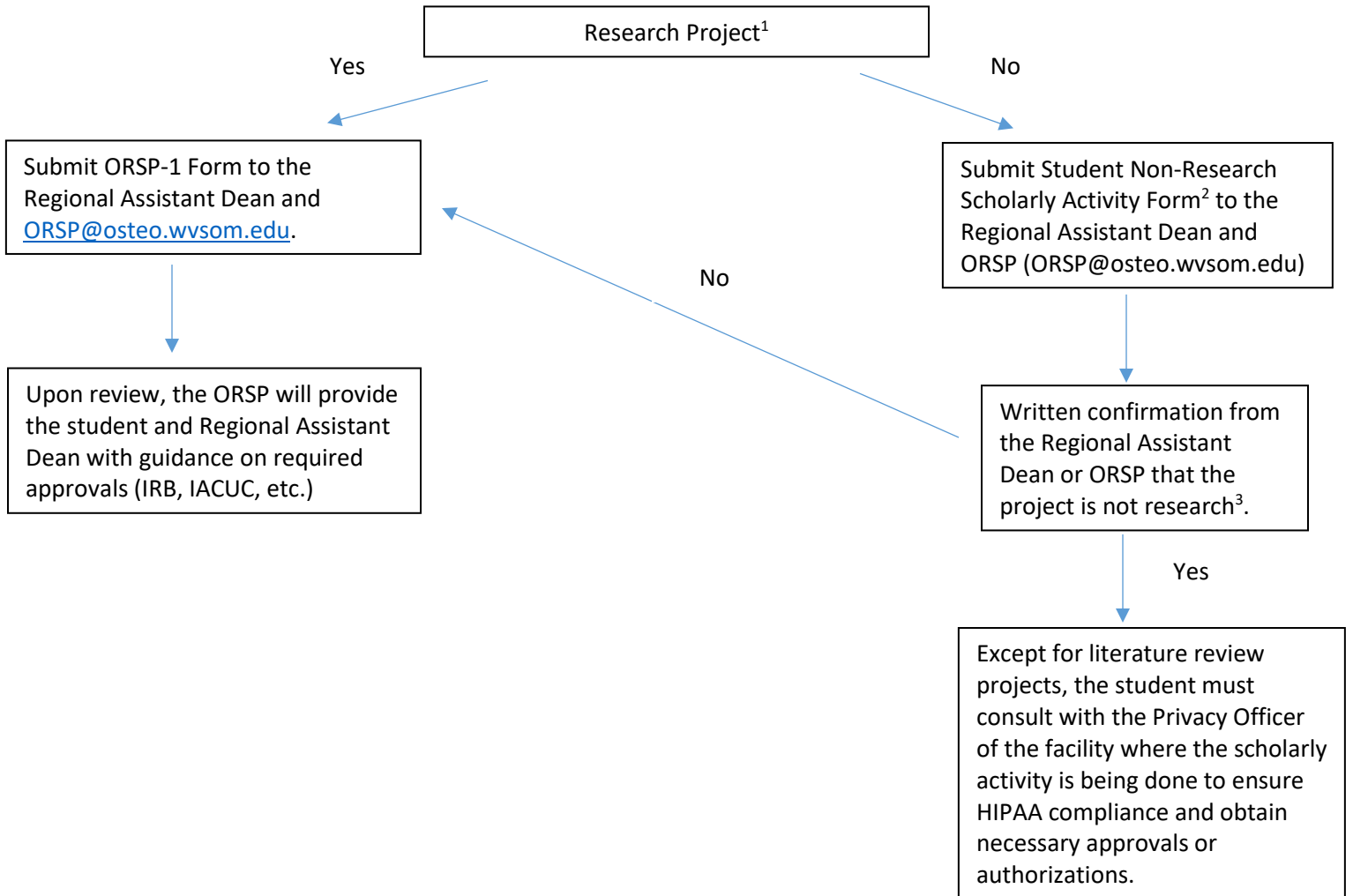


Student Scholarly Activity Flow Chart



¹Case reports involving 3 or fewer cases and literature reviews are not considered to be research for regulatory purposes. Refer to the guidance document available on the ORSP web page (<https://www.wvsom.edu/Research/publications>) regarding Quality Assurance/Quality Improvement Projects for additional information on the differences between QA/QI and research.

²This form is located on the ORSP web page at <https://www.wvsom.edu/Research/orsp-forms>

³Contact the WVSOM IRB at irb@osteowvsom.edu if assistance in making this determination is needed or to request an official non-human subjects research determination letter.