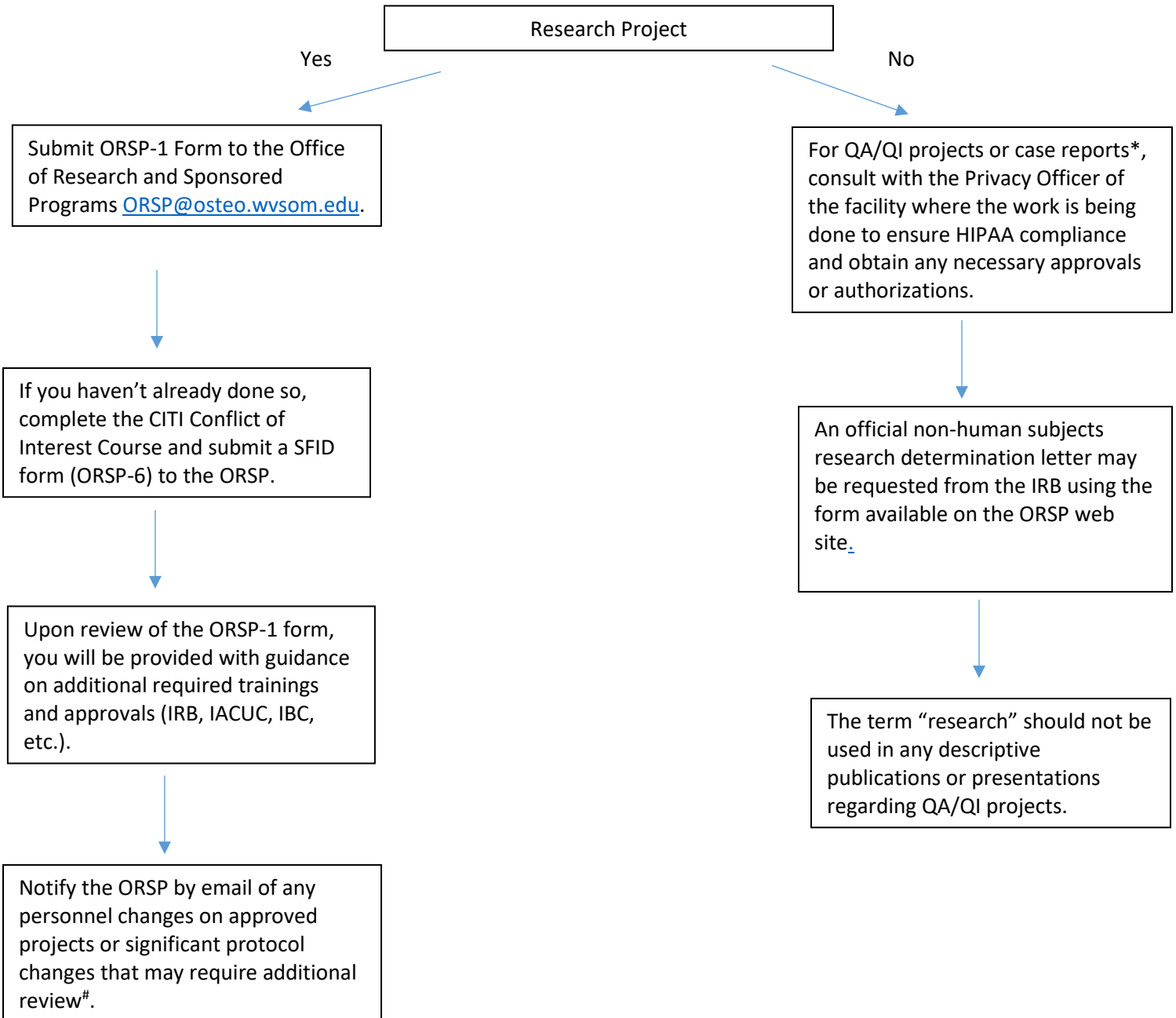


Flow Chart for Initiating Research or Other Scholarly Activity



* Note that reports describing more than 3 cases are considered to be research. Refer to the guidance document on Quality Assurance/Quality Improvement Projects for additional information on the differences between QA/QI and research. The WVSOM IRB may be consulted for assistance in making this determination.

#For example, acquisition of a human cell line that would require IBC review. For studies that have already been reviewed by the IRB, IACUC or IBC, refer to committee procedures on submitting protocol modifications.

Flow Chart for Grant Submission (Both Research and Non-Research Grants)

